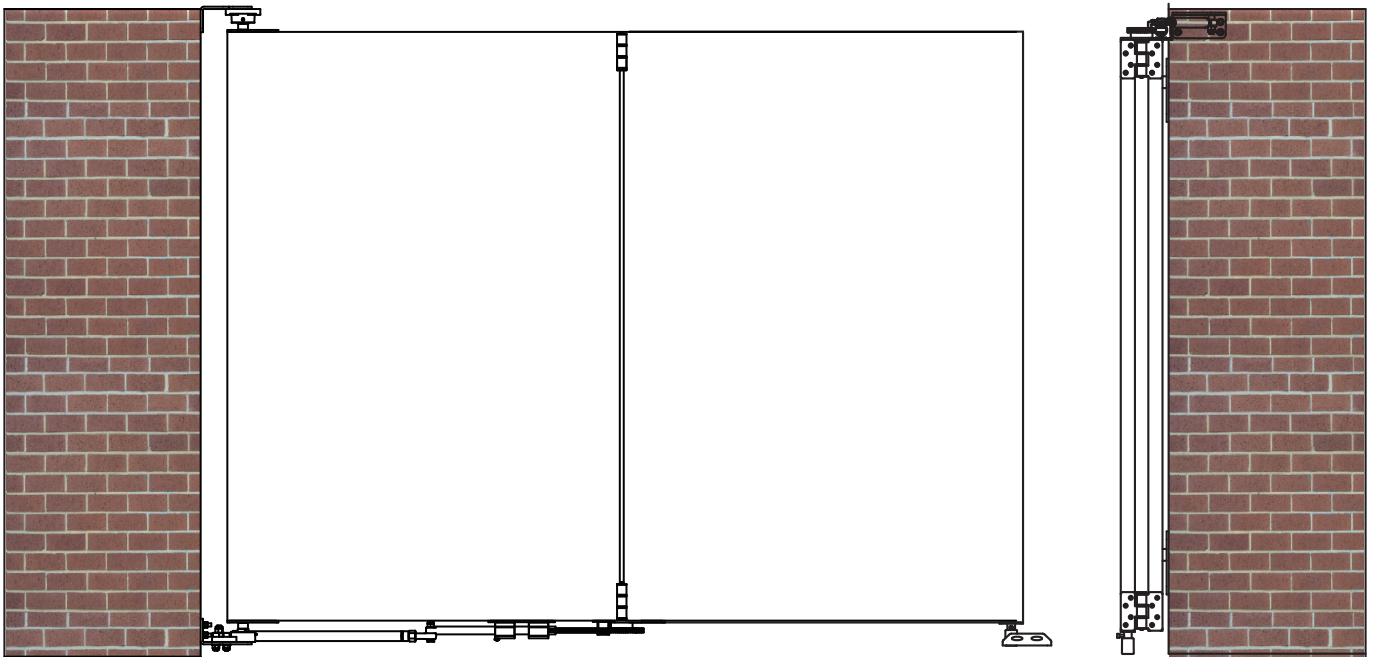


Bi-Folding Hardware Kit For Swing Gate

Installation Manual



Accessories List:

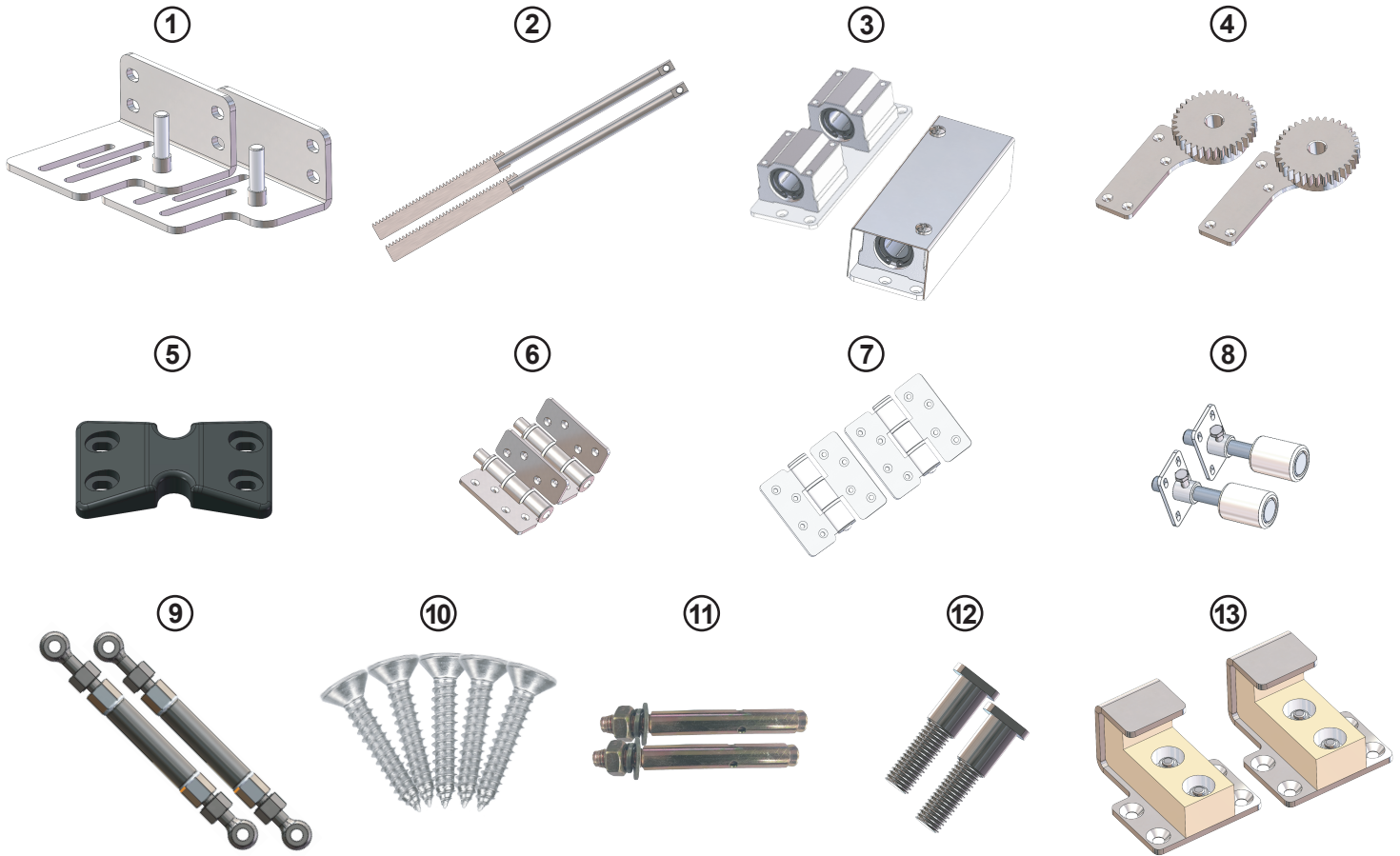


Fig 1

- | | |
|---|-----------------------------|
| ① Gate bracket × 2 | ⑦ Bottom hinge × 2 |
| ② Gear rack rod × 2 | ⑧ Guide roller × 2 |
| ③ Fixing base with protective cover for ② × 2 | ⑨ Connection rod × 2 |
| ④ Gear connection rod × 2 | ⑩ M4.8×32 screw × 56 |
| ⑤ Rubber stopper × 1 | ⑪ M8×80 expansion bolt × 12 |
| ⑥ Upper hinge × 2 | ⑫ Latch × 2 |
| | ⑬ Gear rack limit × 2 |

Installation Tools Reference:

- | | | |
|--|------------------------|----------------------|
| ① Electric drill | ② Percussion drill | ③ Adjustable spanner |
| ④ $\phi 3.2$, $\phi 12$ Drilling bit each | ⑤ Phillips screwdriver | ⑥ Hexwrench |

Important Notes:

1. The kit hardware is ok to installed on the top of gate. The installation manual is only to describe how to do installation on the top of gate.
2. With this hardware kit, you will also need to install automatic swing gate opener together.
3. When in installation, please also consider the actual installation situation.

Complete Installation:

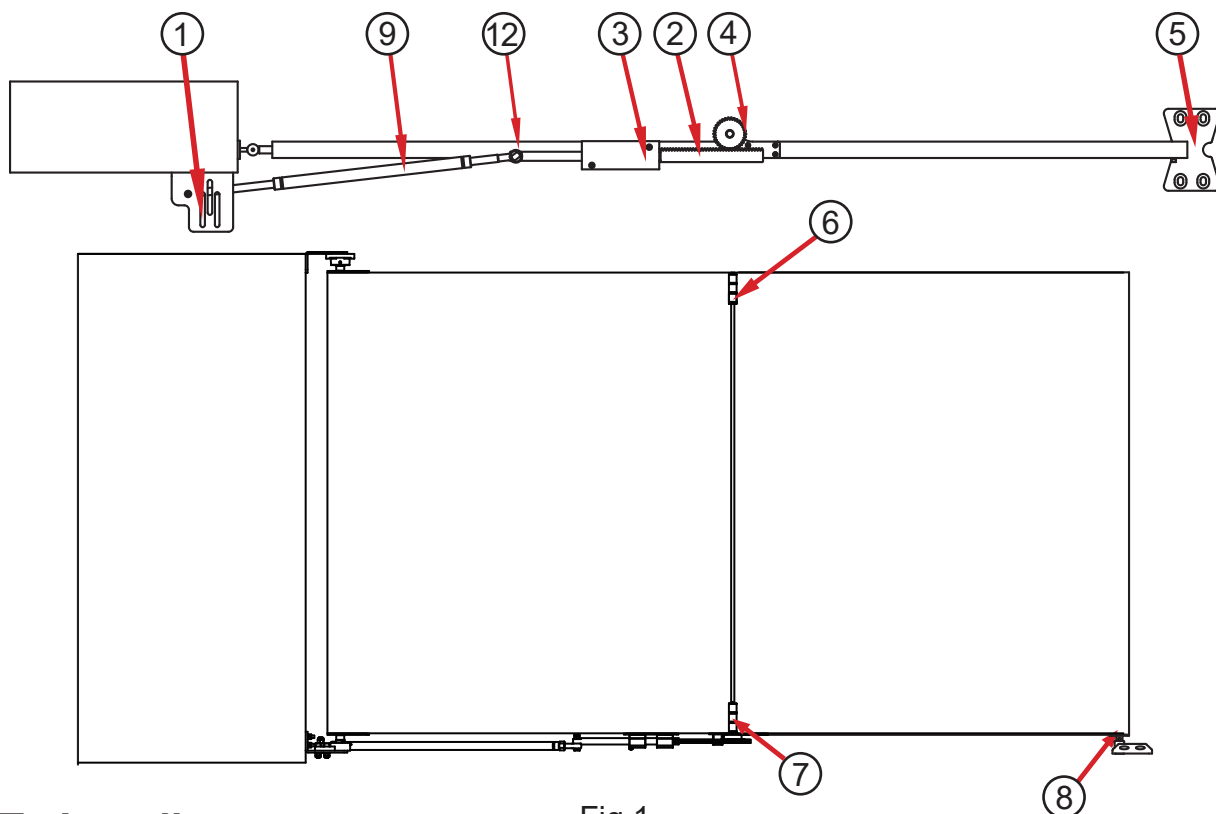


Fig 1

How To Install:

1. Installed the ③ fixing base on the bottom of 1st leaf door(closing to the upper hinge), make fixing base parallel to the gate side line besides of upper hinge, the distance from gate side should be 165-210mm as the Fig 2.

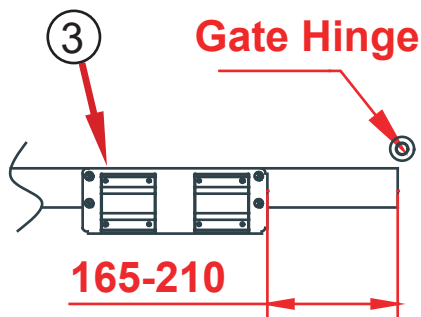


Fig 2

2. Drill the hinge fixing holes on the 1st leaf door and the 2nd leaf door, and the upper hinge should be aligned with the upper edge. Unscrew the screws below the hinge as Fig 3, take out the central shaft, and fix them on the door respectively.

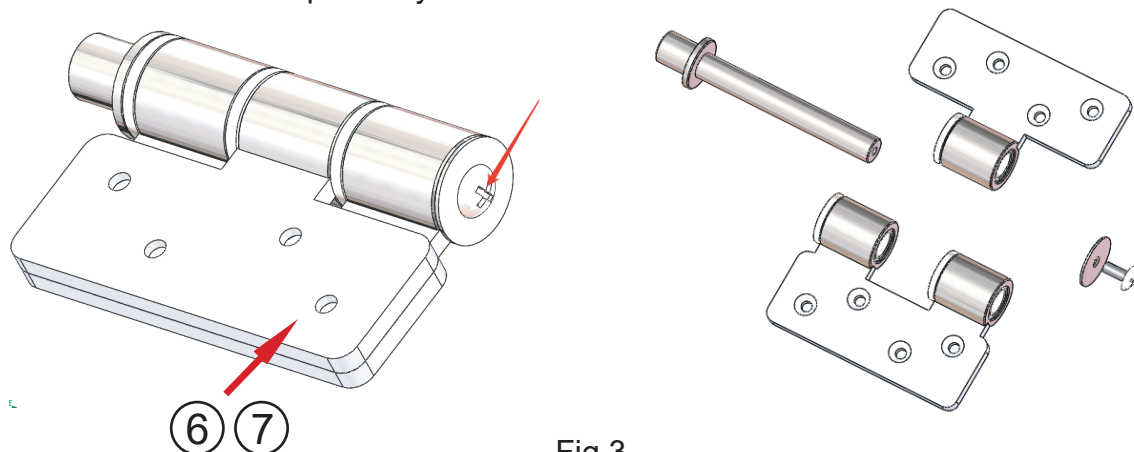


Fig 3

3. Tighten up the screws ⑩ M4.8*32 as Fig 4.

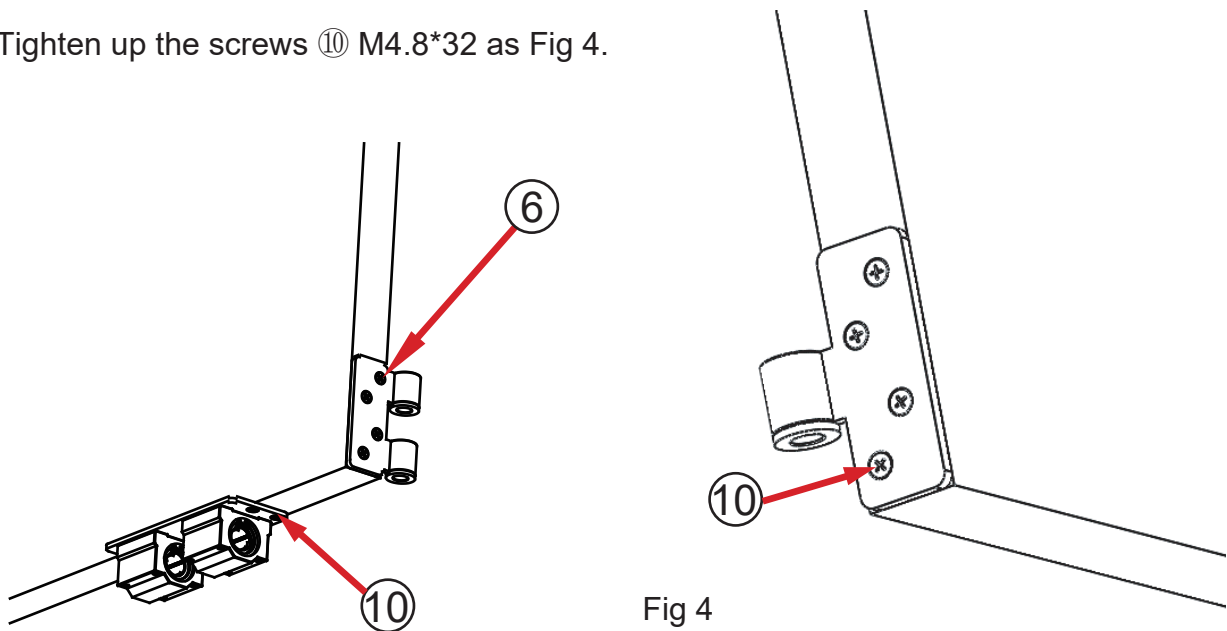


Fig 4

4. To install the ⑧ bottom guide roller, use $\phi 3.2$ and $\phi 13$ drills to drill holes in the bottom of the 2nd leaf door based on the following dimensions. When holes are ready, install the ⑧ guide roller with screws ⑩ M4.8*32 as Fig 5.

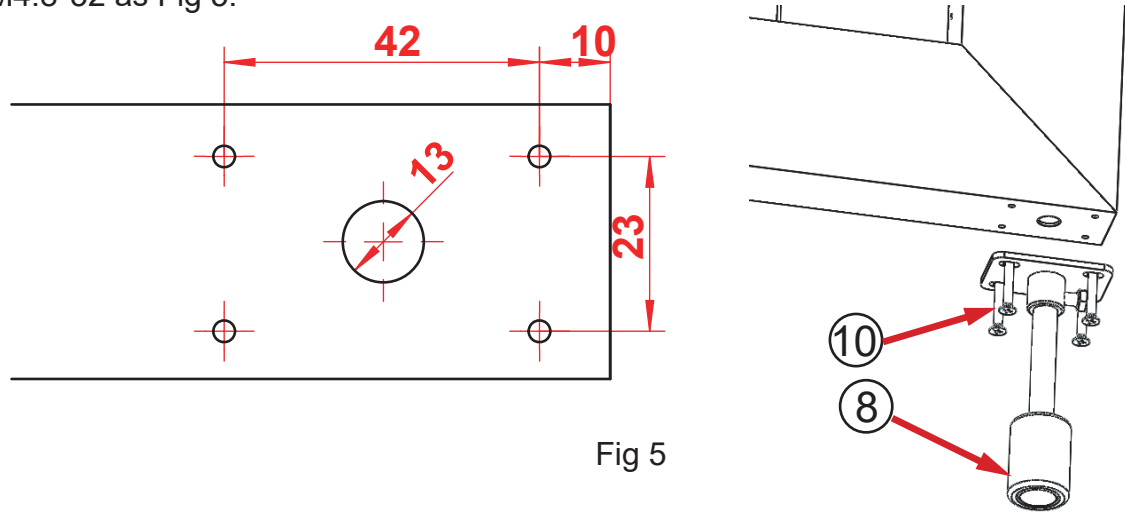


Fig 5

5. Drill the 4 holes at suitable position, and tighten up the ① gate bracket with ⑪ M8*80 expansion bolt as Fig 6.

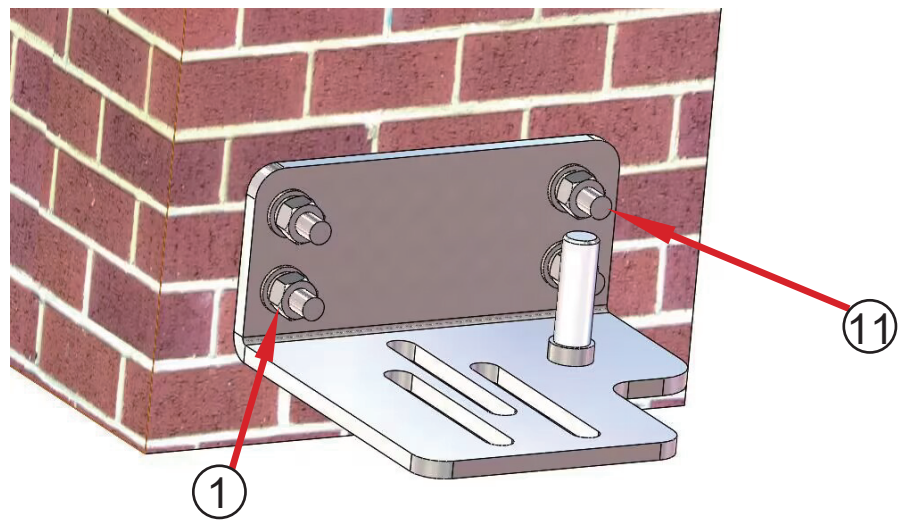


Fig 6

6. Install the 2nd leaf door in correct place and tighten up the hinge screws as Fig 7.

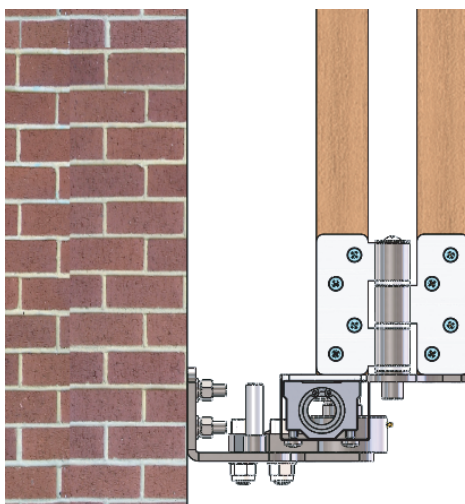


Fig 7

7. Install gear rack limit ⑬.

The distance for gear rack limit with gear should be $\geq 15\text{MM}$ and no effect that gear rod as Fig 8.

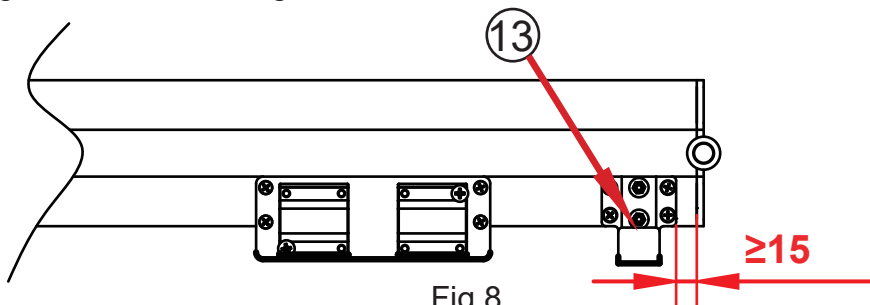


Fig 8

8. Fold the 2 leaves door, insert the ② gear rack rod into the fixing base, and ensure that the gear rack extends beyond the edge of the door by more than 110mm, and then install ④ gear connection rod as Fig 9.

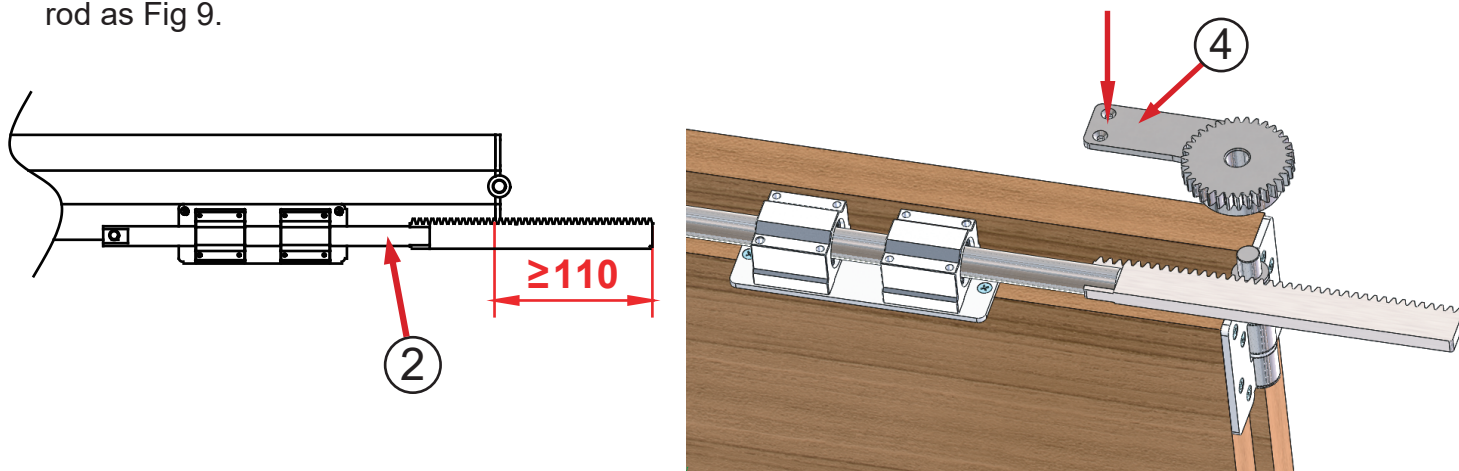


Fig 9

9. Put the ④ gear connection rod in suitable position, and then drill the fixing holes as Fig 10.

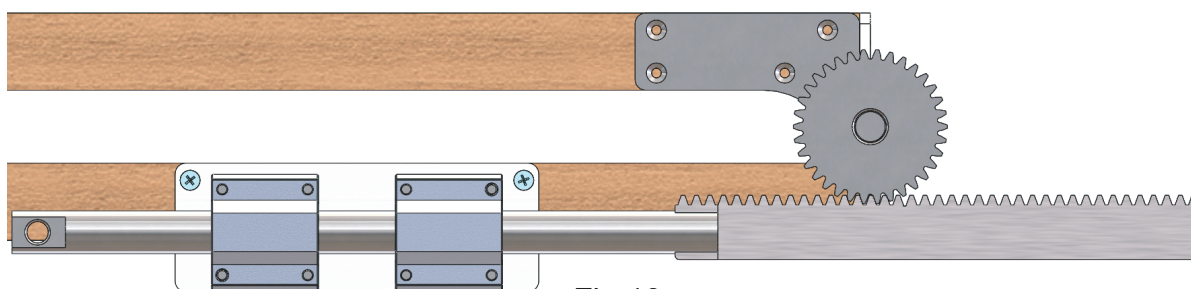


Fig 10

10. Tighten up screws ⑩ M4.8*32 for ④ gear connection rod as Fig 11.

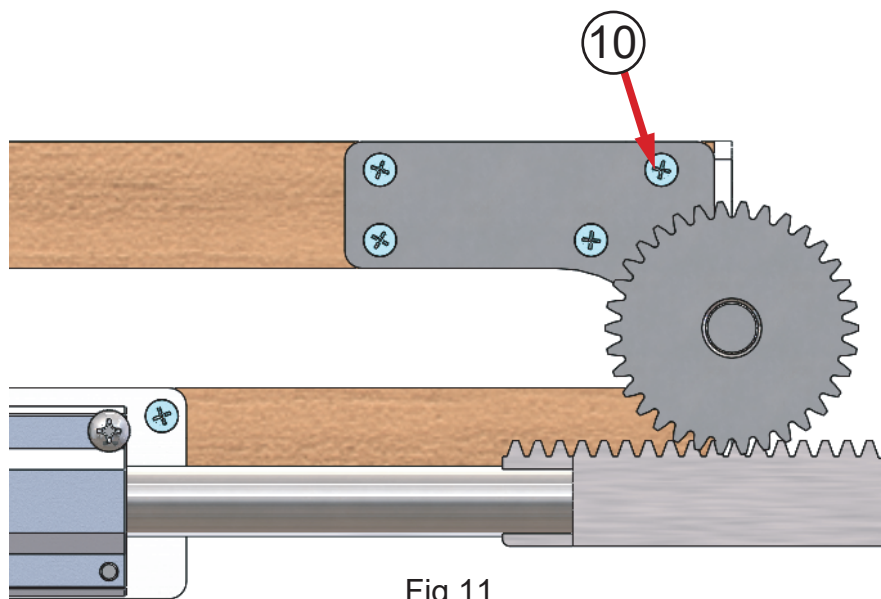


Fig 11

11. Fix the ⑨ connection rod on the ② gear rack rod and the ① gate bracket with ⑫ Latch as Fig 12.

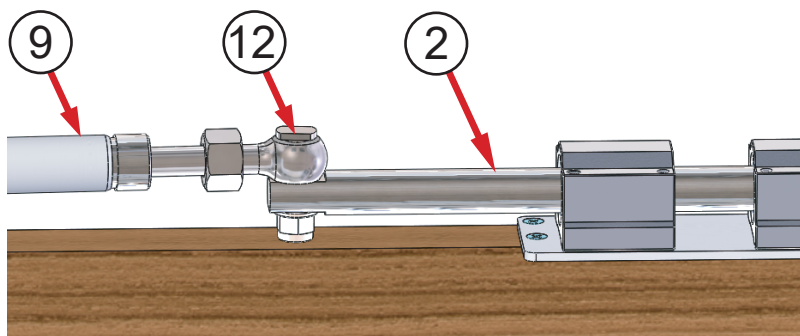


Fig 12

12. Test the effect of the installation of finished 2 leaves fold door. If it is not quite fixed. You could do adjustment by adjusting the extension length of the ② gear rack rod, the length of the ⑨ connection rod, the ① gate bracket etc as Fig 13.

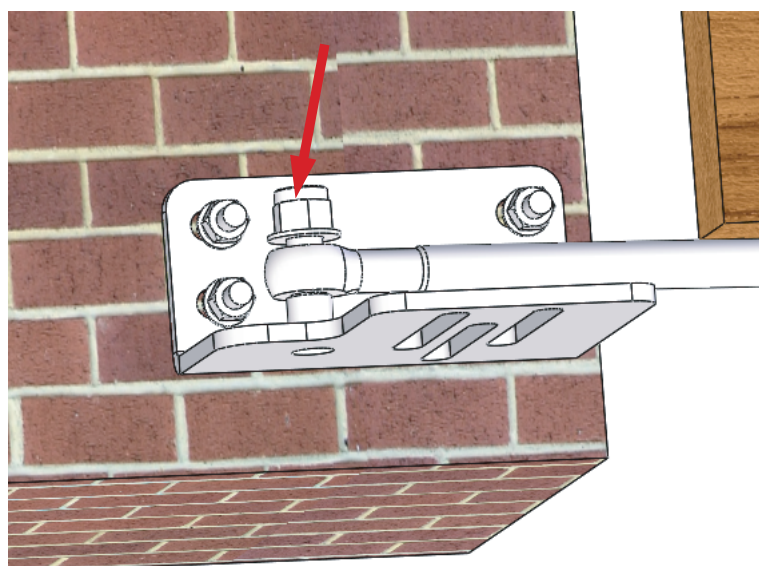


Fig 13

13. After installation all ok, tighten up the nut of the ⑨ connection rod as Fig 14.

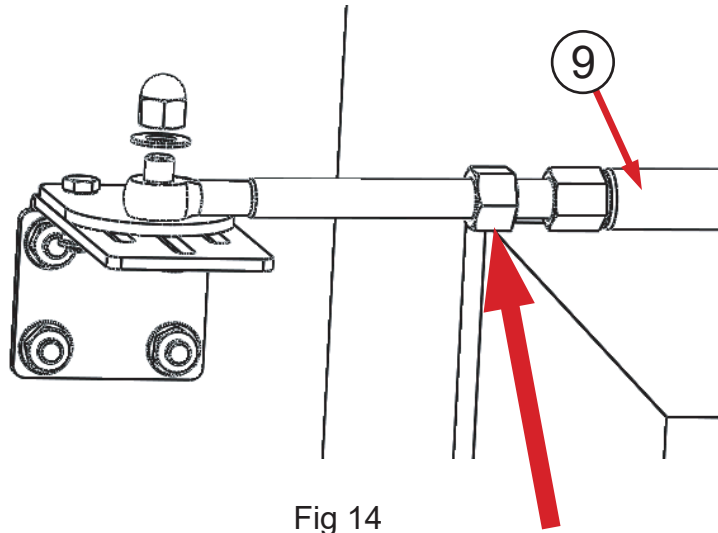


Fig 14

14. Close the door to the correct position, use pen or other tools to mark the position of the rubber stopper hole, and drill with a $\phi 10$ drill bit. And then install the ⑤ rubber stopper with ⑪ M8*80 expansion bolt as Fig 15.

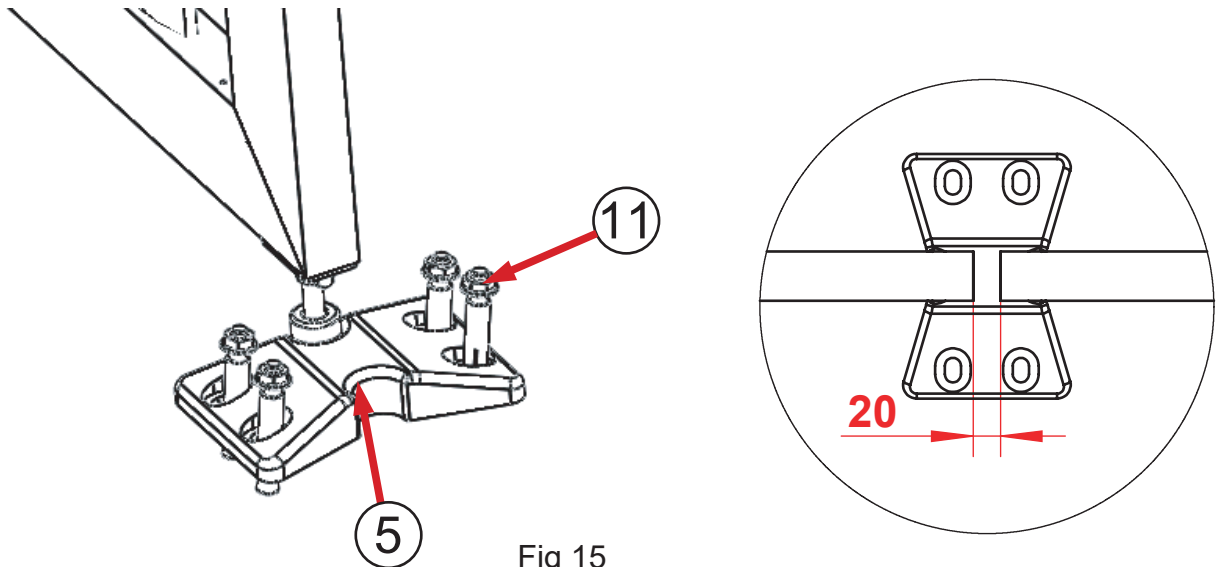


Fig 15

15. After adjusting the angle of door open and close, finally install the protective cover on the fixing base as Fig 16.

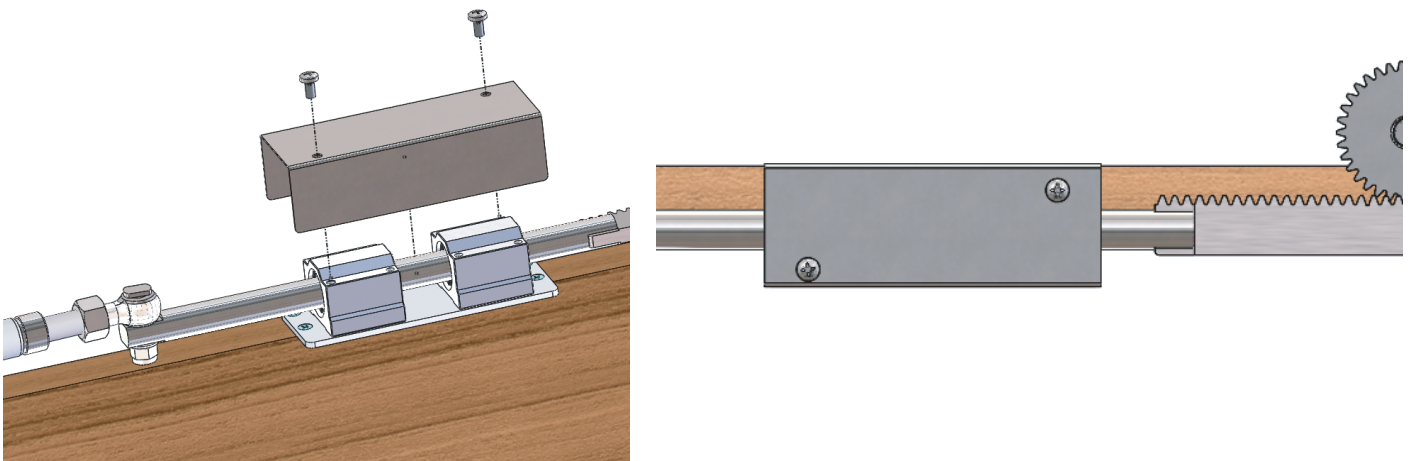


Fig 16