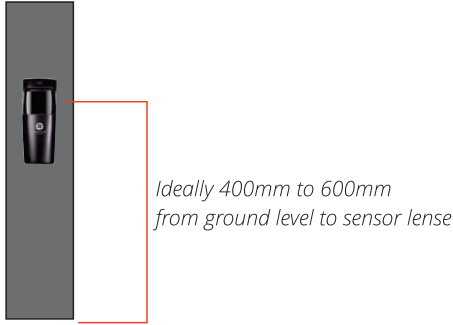




Voltage: 12-24V AC/DC
(TX option to power by 2xAAA)
Consumption: RX 30mA
(TX $\leq 300\mu\text{A}$ Using Batteries)
(+TX 15mA If Wired)
Relay Output: NO/NC (1A)
Range: 10M Max (-30% Poor Conditions)
IP Rating: 55
Infrared Frequency: 1.92KHZ
Wave Length: 940nm
Operating Temperature: -10°C to 70°C
Dimensions: 100x34x40mm
TX AAA Recommended Battery Replacement:
 ≤ 6 Months Residential/ ≤ 2 Months Commercial

DUKIE + Adjustable Photocell *with battery powered TX*

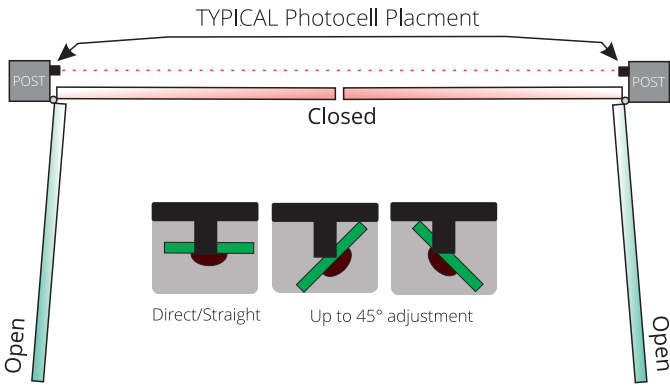
Installation Height



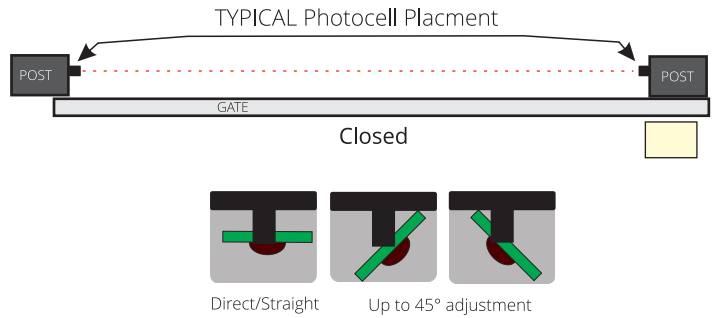
Dimensions



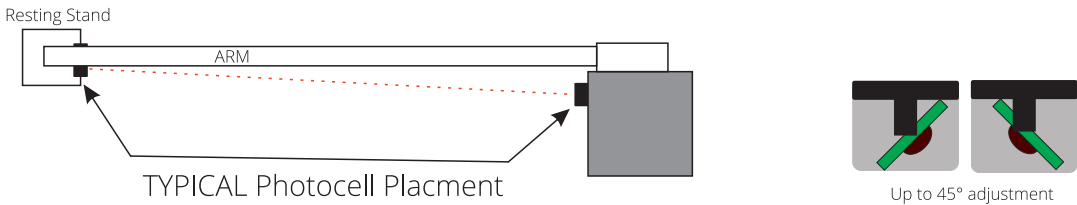
Swing Gate Placement



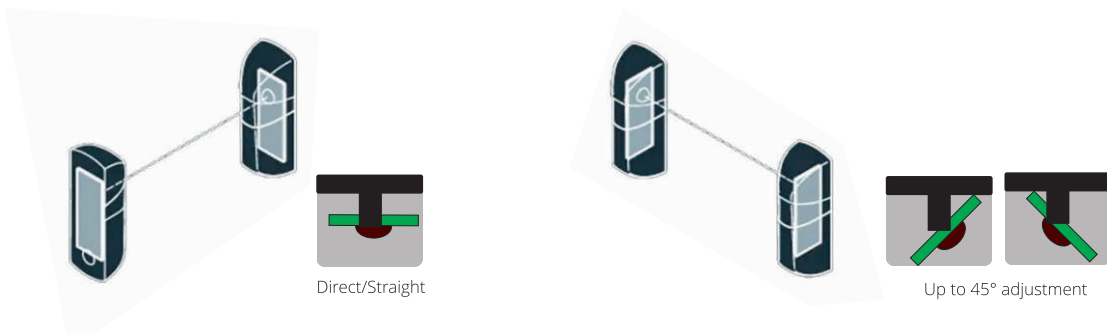
Sliding Gate Placement



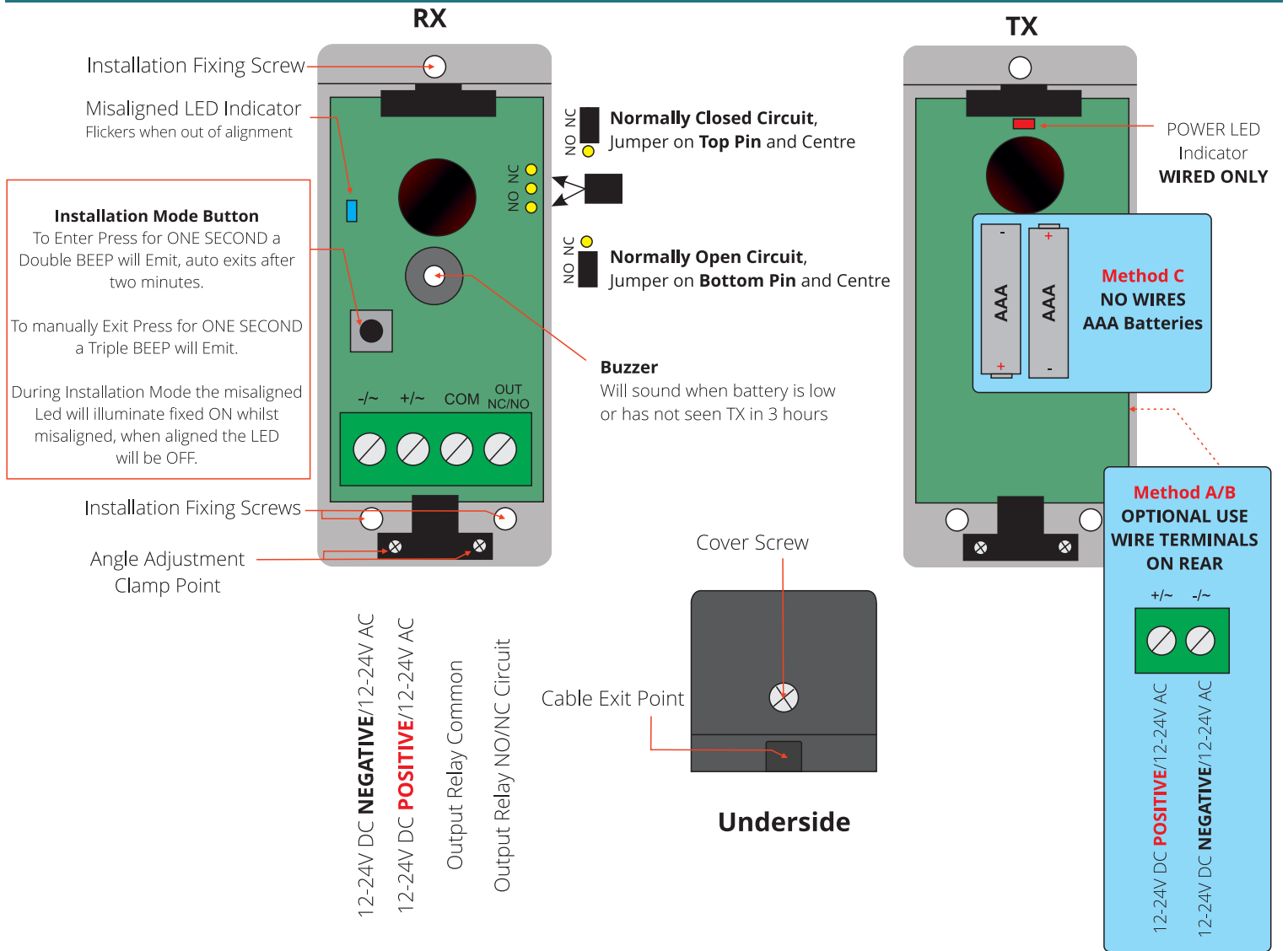
Boom Gate



Alignment



Photocell Layout



Diagram

Always refer to the system specific installation manual for the connection points on the system

