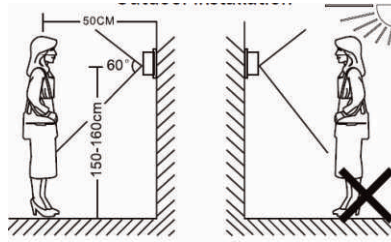


Specifications



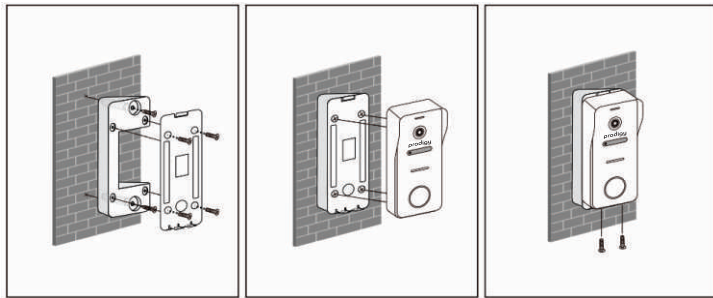
Camera Sensor: CMOS
View angle: 1/3"(120°)
Resolution: 1000TVL
Night Vision: IR LEDs(120°)
Power supply: Via Intercom BUS Line
Operation temp.: -10~+50°C
Installation: Surface mount

Precautions



- Avoid (if possible) installing the outdoor station where it will be seeing direct sunshine as it can affect the video quality.
- Keep all cabling and the device at least 30cm away from AC power to avoid induction and interference
- Always ensure the system is de-powered whilst carrying out any work

Installation



Wedge Bracket Method

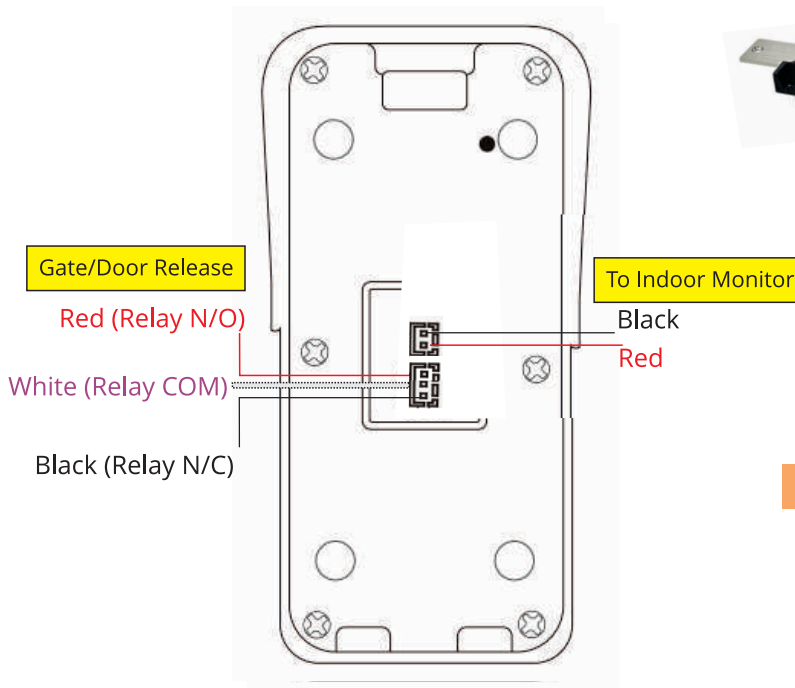
1. Drill the 6mm diameter holes for the wedge bracket mounting
2. Install the sticky side of the gasket to the **BACK (WALL SIDE) of the outdoor stations backing plate**
2. Install the backing plate to the wedge bracket (Four screws)
3. Connect the wires through the hole
4. Fasten the bottom security screws

Direct Method

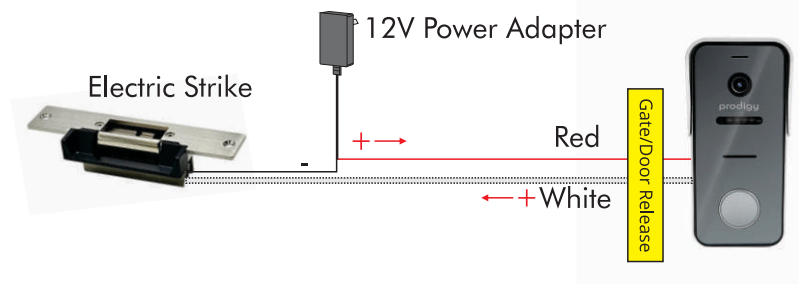
1. Install the sticky side of the gasket to the **BACK (WALL SIDE) of the outdoor stations backing plate**
2. Drill the 6mm diameter holes for the outdoor station mounting
3. Install the backing plate to the post/wall
3. Connect the wires through the hole
4. Fasten the bottom security screws

Outdoor Station Wiring

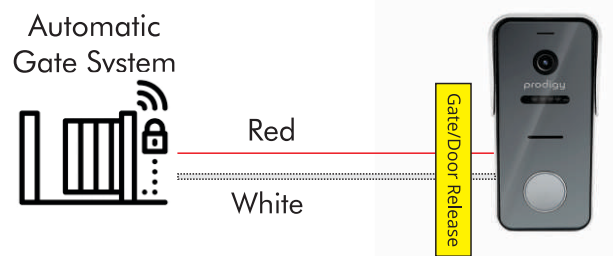
Overview



Electric Strike (Power ON to Unlock/Fail Secure)



Automatic Gate



Warranty Terms and Conditions

The product is warranted for a period of twelve months (one year) from the date of purchase, unless expressly specified as extended warranty (extension to the warranty period). The product is to be installed for its intended purpose and for normal use as outlined within the installation manual, the product warranty is exclusively for defects in manufacturing and manufacturing workmanship. It does not cover out of guidelines use, natural or other disasters, abnormal weather conditions, damage incurred in shipping or handling, damage caused by disaster such as fire, flood, wind, earthquake, lightning, excessive voltage, mechanical shock, water damage, damage caused by unauthorized attachment, alterations, modifications, or foreign objects, damage caused by peripherals (unless such peripherals were supplied by Prodigy), defects caused by failure to provide a suitable installation environment for the products, damage caused by usage of the products for purpose other than those for which it was designed, damage from improper maintenance, damage arising out of any other abuse, mishandling, and improper application of the products.

At its discretion Prodigy will require the item determined by the support staff to be returned to base in its original unmodified condition for a warranty inspection if within the warranty period. A return authorization "RA" number will be provided to be enclosed with the product in question. The warranty will not cover freight fees to base, customs fees or any labour costs at the installation site but will cover repair or replacement of the product as seen fit. Prodigy will cover the freight of the returned item to the original address if deemed as a warranty repair or replacement item. Any warranty repairs or replacements continue to carry through the remaining warranty period and do not extend or restart the period.

Under no circumstances shall Prodigy be liable for any special, incidental, or consequential damages based upon breach of warranty, breach of contract, negligence, strict liability, or any other legal theory. Such damages include, loss of profits, loss of the product or any associated equipment, cost of capital, cost of substitute or replacement equipment, facilities or services, down time, purchaser's time, the claims of third parties, including customers, and injury to property.

This warranty contains the entire warranty and shall be in lieu of any and all other warranties, whether expressed or implied (including all implied warranties of merchantability or fitness for a particular purpose). And of all other obligations or purporting to act on its behalf to modify or to change this warranty, nor to assume for it any other warranty or liability concerning this product.

Prodigy will at its option repair or replace out-of-warranty products at a determined cost which are returned to its base according to the following conditions. Anyone returning goods to Prodigy must first obtain an authorization number. Prodigy will not accept any shipment whatsoever for which prior authorization has not been obtained. Products which Prodigy determines to be repairable will be repaired and returned. A set fee which Prodigy has been predetermined and which may be revised from time to time will be charged for each unit repaired. Products which Prodigy determines not repairable will be replaced by the nearest equivalent product available at that time. The current market price for the replacement product will be charged for each replacement unit.